

Investigations

FFA □

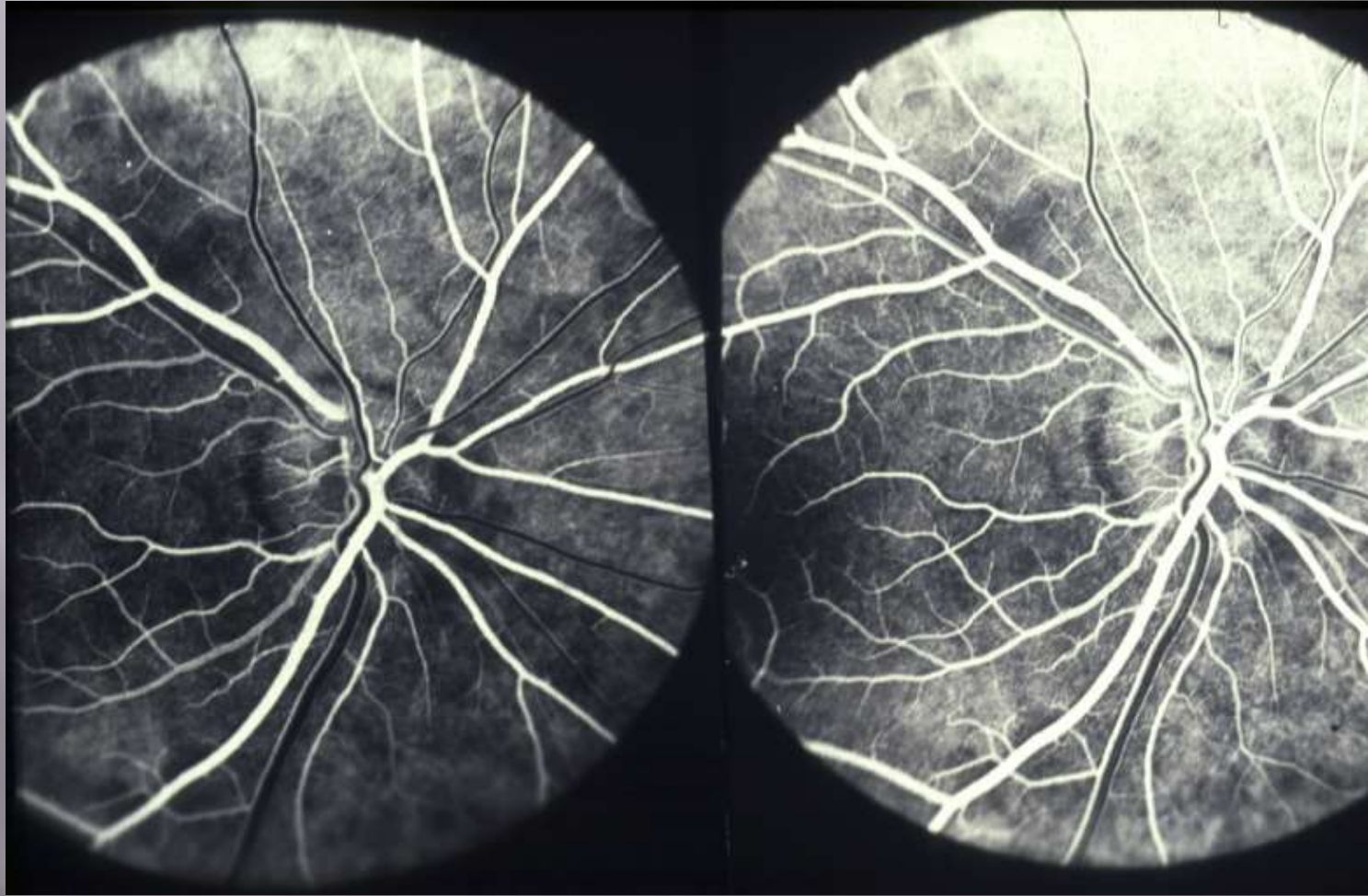
Perimetry □

Ultrasound □

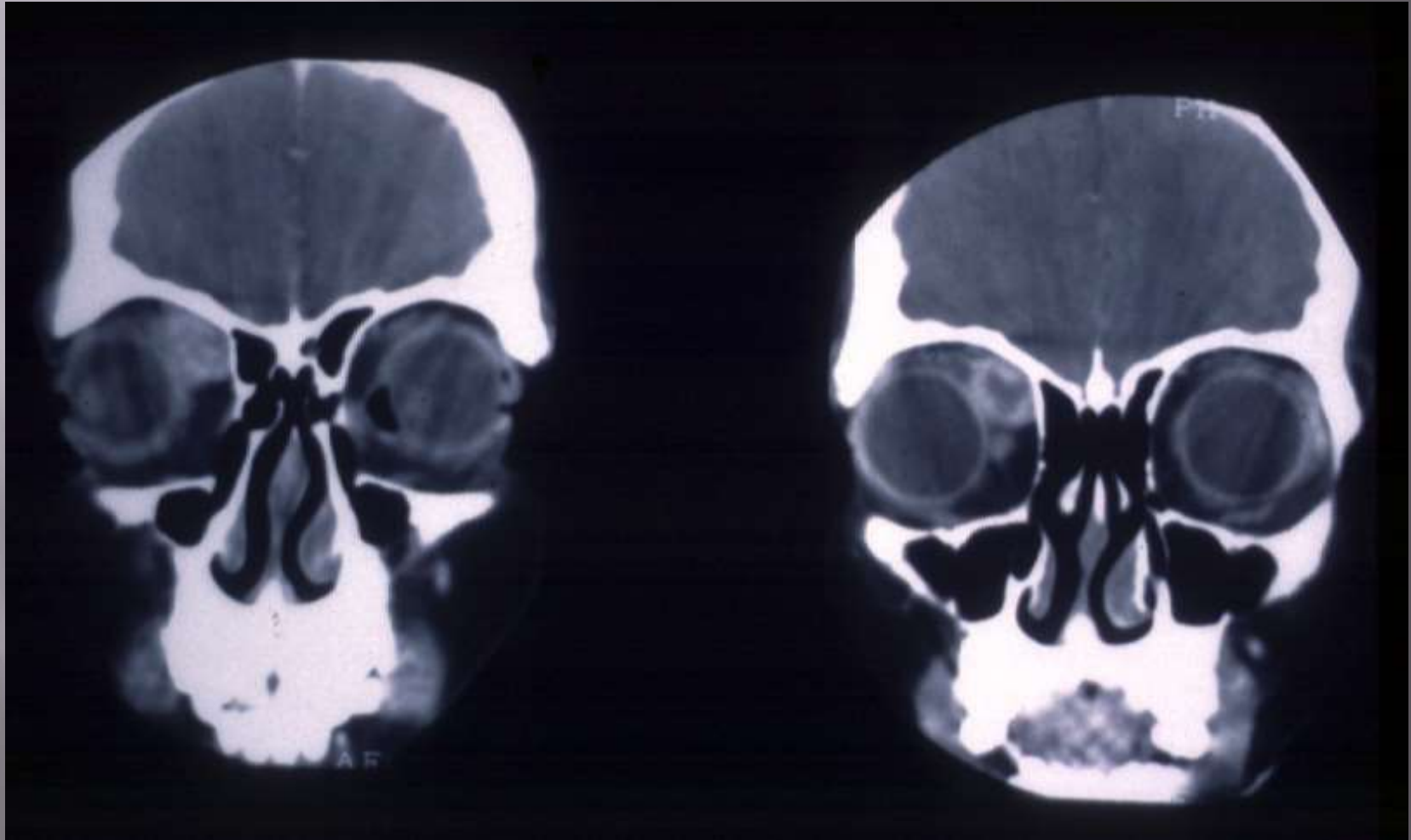
CT □

MRI □

FFA



CT scan



Ultrasound

Uniform
V-shaped
membrane

Uniform
echotexture
at low gain

Minimum after-
movements in early
retinal detachment

Flickering movement
over the membrane



B-Scan of Retinal Detachment

Table of Contents

Back

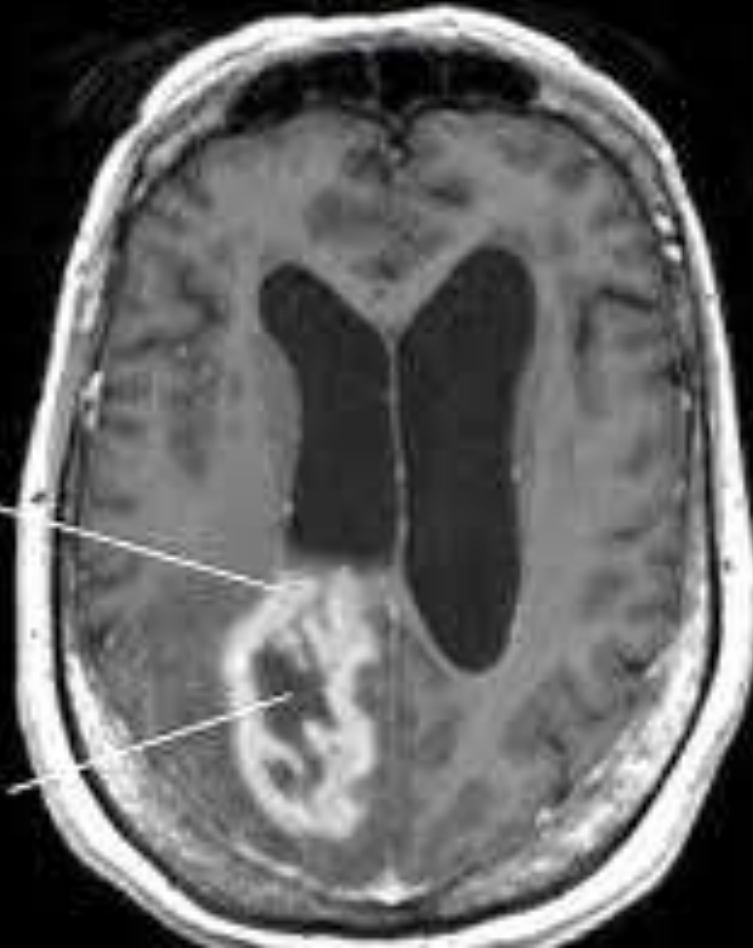
Main Menu

MRI

typical high grade glioma

irregular
enhancement
and borders

necrotic
center



Thank you

